

Annex 14.9 Overview GSPP accepted seed health test methods and validity of the results V1.1

To test tomato seeds for the presence of Cmm a specific test method is prescribed by GSPP. Due to new technological developments and/or experiences in practice of tomato seed, plant and fresh product production, protocol changes can be established. These methods are published by ISF, on the ISF-website, under ISHI-Veg. An overview of the accepted protocols over time is presented in table 1. In table 2 an overview of the validity of the test results obtained with specific test methods is presented.

After a method change, as a default, seeds in stock (Basic seeds and Commercial seeds) do not need to be retested after enforcement of any new ISHI-method version, if they are tested with the valid testing method at the moment of testing, for the ISHI-methods version '3+spiking' and newer.

However, under certain circumstances, retesting of batches with new methods might be warranted. For this purpose the ITC reviews new methods and determines if there is need for retesting of batches declared free from Cmm using previously accepted protocols.

The ITC will forward their recommendation for acceptance of a new protocol to the board as a 'transitional measure' including a transition period (default 6 months). The GSPP-board will approve or disapprove the proposal. The GSPP secretariat publishes the transitional measure and informs the GSPP-participants about the conclusion of the board (see Figure 1.) and the transition period.

Figure 1. Process flow, new Cmm seed test methods.

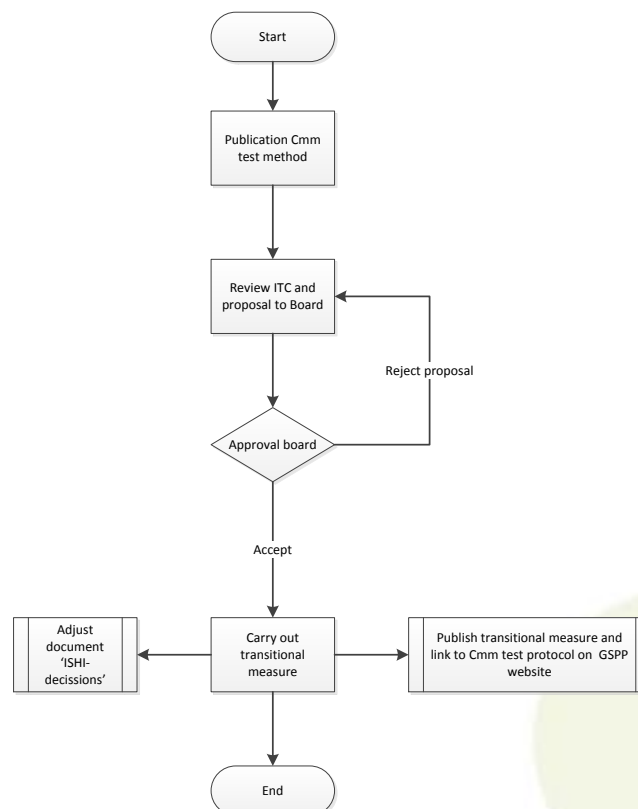


Table 1. Overview of GSPP accepted methods.

Test method	Start of GSPP-seed	Test method in use from publication date onwards							
	1-1-2007	1-1-2010	01-10-2011	30-06-2012	01-07-2012	01-06-2014	4-9-2015	1-7-2016	
ISHI 3	Method in use		Method no longer in use						
ISHI 3+spiking			Method in use	Method no longer in use					
Transition period to ISHI 4					End transition period				
ISHI 4				Method in use	Method no longer in use				
Transition period to ISHI 4.1						End transition period			
ISHI 4.1						Method in use		Method no longer in use	
Transition period to ISHI 4.2 / 4.3 and subversions									
ISHI 4.3 and subversions								Method in use	

Table 2. Validity of test results.

Test method	Start of GSPP-seed	Seeds test result valid through, from the date of testing							
	1-1-2007	1-1-2010	01-10-2011	30-06-2012	01-07-2012	31-05-2014	01-06-2014	4-9-2015	1-7-2016
ISHI 3	Valid test result		Test results no longer valid, retesting necessary with method valid at date of testing						
ISHI 3+spiking	Method development ¹		Valid test result						
Transition period to ISHI 4		Method development ¹	Valid test result						
ISHI 4					Valid test result				
Transition period to ISHI 4.1				Method development ¹	Valid test result				
ISHI 4.1					Valid test result				
Transition period to ISHI 4.2 / 4.3 and subversions							Method development ¹	Valid test result	
ISHI 4.2 / 4.3 and subversions								Valid test result	

¹ Seed tests might already be in use for testing and validation of the method before ISHI is able to publish the method and it is officially applicable for use in GSPP. Therefore test results generated with such a method before adoption date are regarded tested with the approved method when it is later on adopted by ISHI and GSPP. When the method is not adopted, retesting is necessary, as seeds are not tested according to the latest version of the GSPP-accepted method.